



---

## Q-LOGIC 3 UPDATE 1.4.10 - RELEASE DETAILS

### Affected Products:

All Q-logic 3 systems

### Firmware Pack (1.4.10) and Individual Module Firmware:

| Device   | Software Version |
|--|------------------|
| Power Base   | 01.052.011       |
| Hand control (STD and Light) /<br>Enhanced Display | 01.134.025       |
| Hand control e                                     | 01.134.025       |
| SAJ / Attendant                                    | 01.014.000       |
| AAM / LAM  | 01.022.003       |
| SCIM / Sip and Puff / ECM                          | 01.015.000       |
| Iaccess  | 01.011.002       |
| Case – R   | 01.001.073       |
| Case – L   | 01.001.073       |
| 1313 Handheld                                      | 01.039.001       |
|  |                  |

## Programmer Versions for Best Performance:

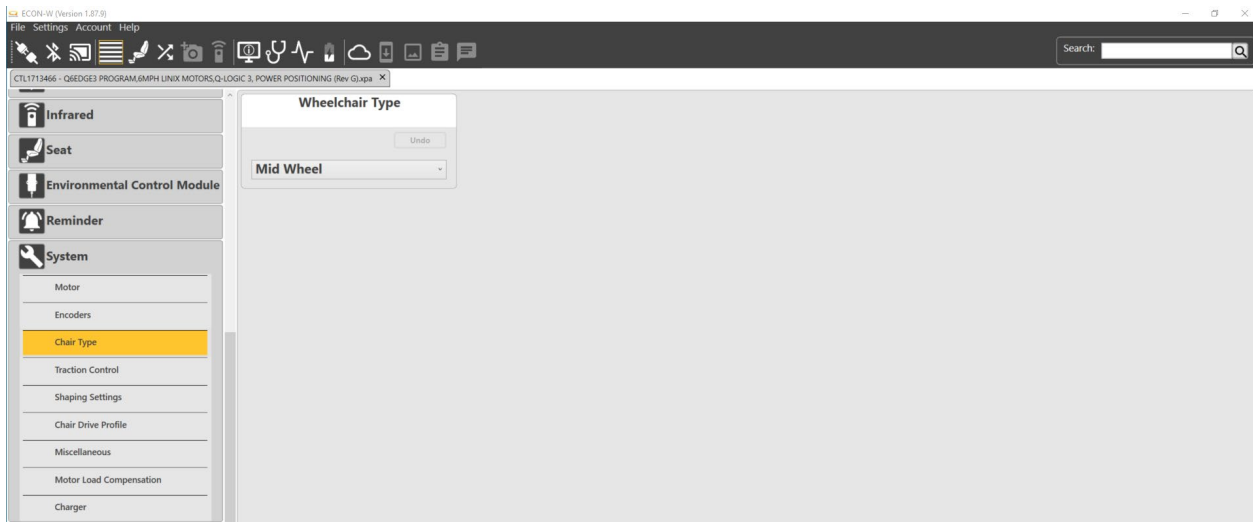
Econ-W – Version 1.87.9 / Handheld – Version 01.039.001

## SYSTEM UPDATES:

### 1). Support for upcoming 4Front2 & 4Front2 HD launch

#### Chair Type:

Chair type configures the wheelchair type precondition to use traction control settings if applicable. This parameter must be set according to the chair base. Misconfiguration will lead to a speed reduction warning and unit enters rescue mode until chair type is corrected.



#### Parameter settings:

**Midwheel** – Use this wheelchair type for midwheel drive units. When the wheelchair type is set to midwheel then the traction control setting will be set to none (see next setting traction control technology for further explanation).

**Frontwheel** – Use this wheelchair type for 4Front and 4Front2 (coming soon). When the wheelchair type is set to frontwheel then the traction control setting can be set 2 ways (see next setting traction control technology for further explanation).

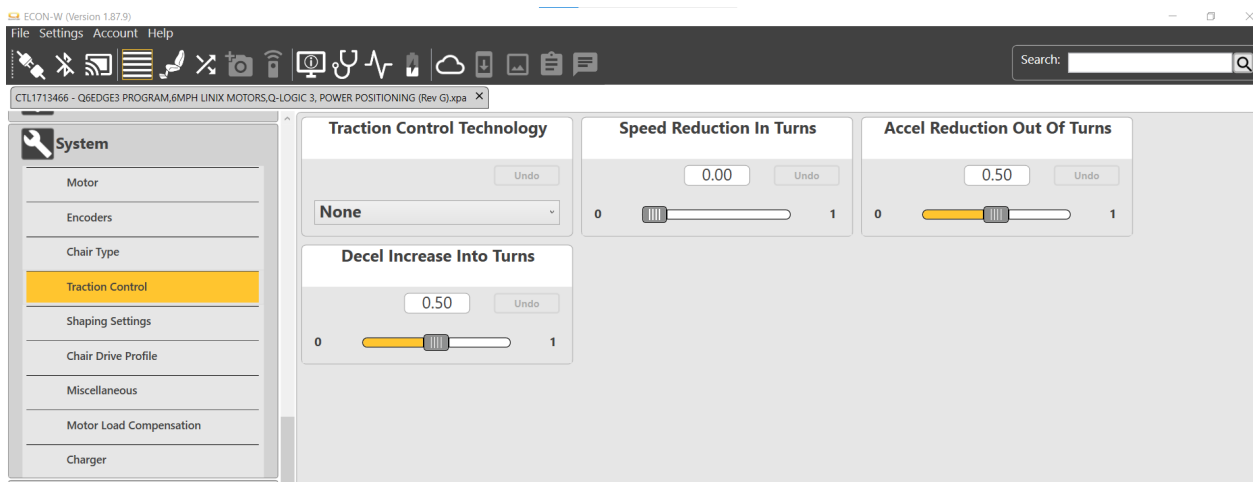
- 4Front – frontwheel & Caster Sensors
- 4Front2 & 4Front2 HD – frontwheel & STC (smart traction control)

- Note: setting the 4Front to front wheel and STC will result in a speed reduction warning and reduced speed. Current 4front is not compatible with Smart Traction Control.

**Rearwheel** - Use this wheelchair type for rearwheel drive units. When the wheelchair type is set to rearwheel then the traction control setting will be set to none (see next setting traction control technology for further explanation).

### Traction Control Technology:

Disables (none) or enables either the Caster Sensors or Smart Traction Control as the drive stabilizing technology, which is required for front wheel drive chairs. If set to Caster Sensors then the Caster calibration function needs to be performed to assure correct operation of the system.



### Parameter Settings:

**None** – Used for midwheel and rearwheel chair types

**Caster Sensor** – Used for 4Front.

**STC (Smart Traction Control)** – Used for 4Front2 & 4Front2 HD.

**\*Note:** Any mismatch of the above chair type and traction control technology will result in a warning and reduction in speed indicated by yellow status symbol. To correct the warning and drive condition ensure that the chair type is matched with the correct traction control technology.

## 2). Enhanced turning for non-llevel units when elevated.

### XPA FILES UPDATE:

#### 1). Battery charge detection feature disabled out of production.

The battery charge detection parameter was designed to alert clients when a system was on charge, but the charger turned off and the system was no longer charging. When this occurred the system generated an error #75. Since development of this feature the chargers provided with Quantum units now have a float stage which will turn the charger back on after a period of time. Once the warning occurs however it will not reset even if the charger float stage turns back on.

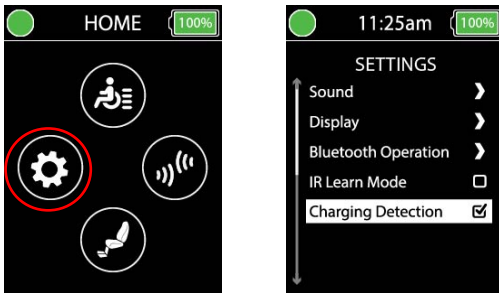
To help reduce confusion of this warning occurring we have decided to disable this parameter out of production and allow this to be enabled when needed by the provider or client themselves.

#### Programming:

The charging detection can be enabled / disabled by 2 methods, through the client's settings menu or by a programming device.

##### 1). Client Menu:

Settings>Charging Detection



## 2). Chair type and traction control technology set for each model.